

Setting up the digital SLR camera for use in oral cancer screening

Oral cancer screening and prevention program



dental health
services victoria
oral health for better health

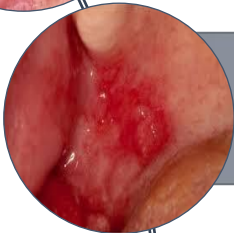
Oral cancer screening and prevention program



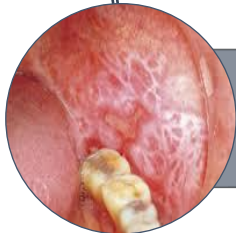
Oral cancer screening and prevention program



Leukoplakia



Erythroplakia



Oral Lichen Planus

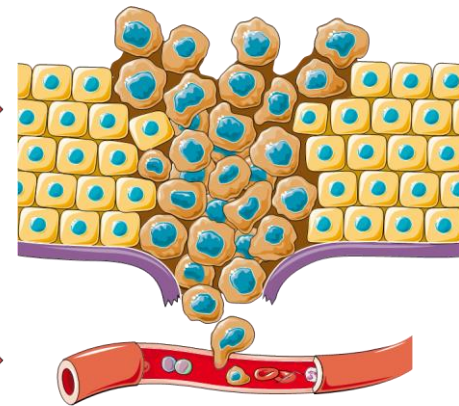


Hyperplastic Candidosis



Submucous Fibrosis

OSCC



Oral cancer screening and prevention program



Camera body

Macro lens

Adapter (58-62mm)

Memory card

Memory card reader

Camera body battery + spare (charge overnight)

Ring flash

Ring flash batteries

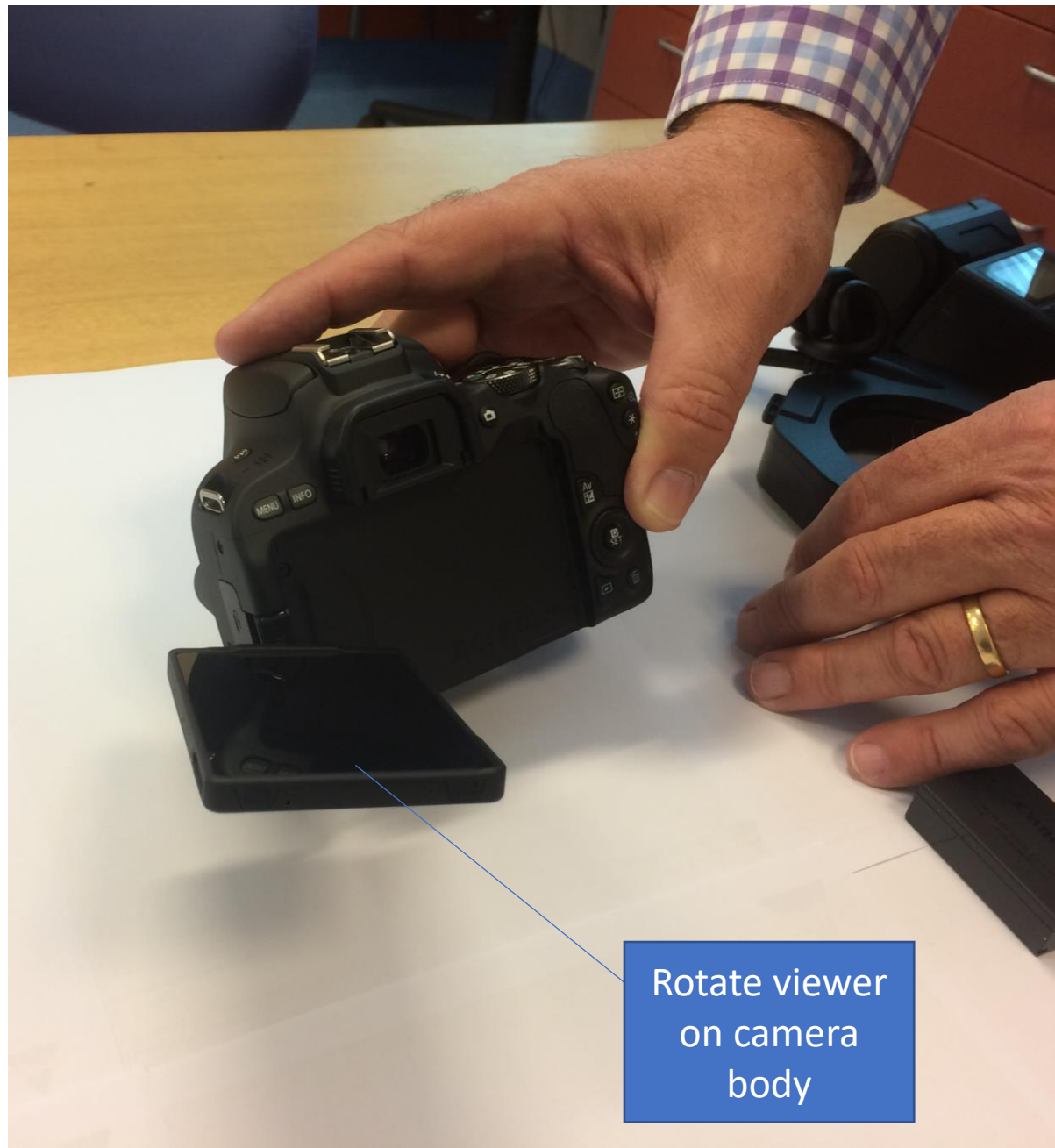
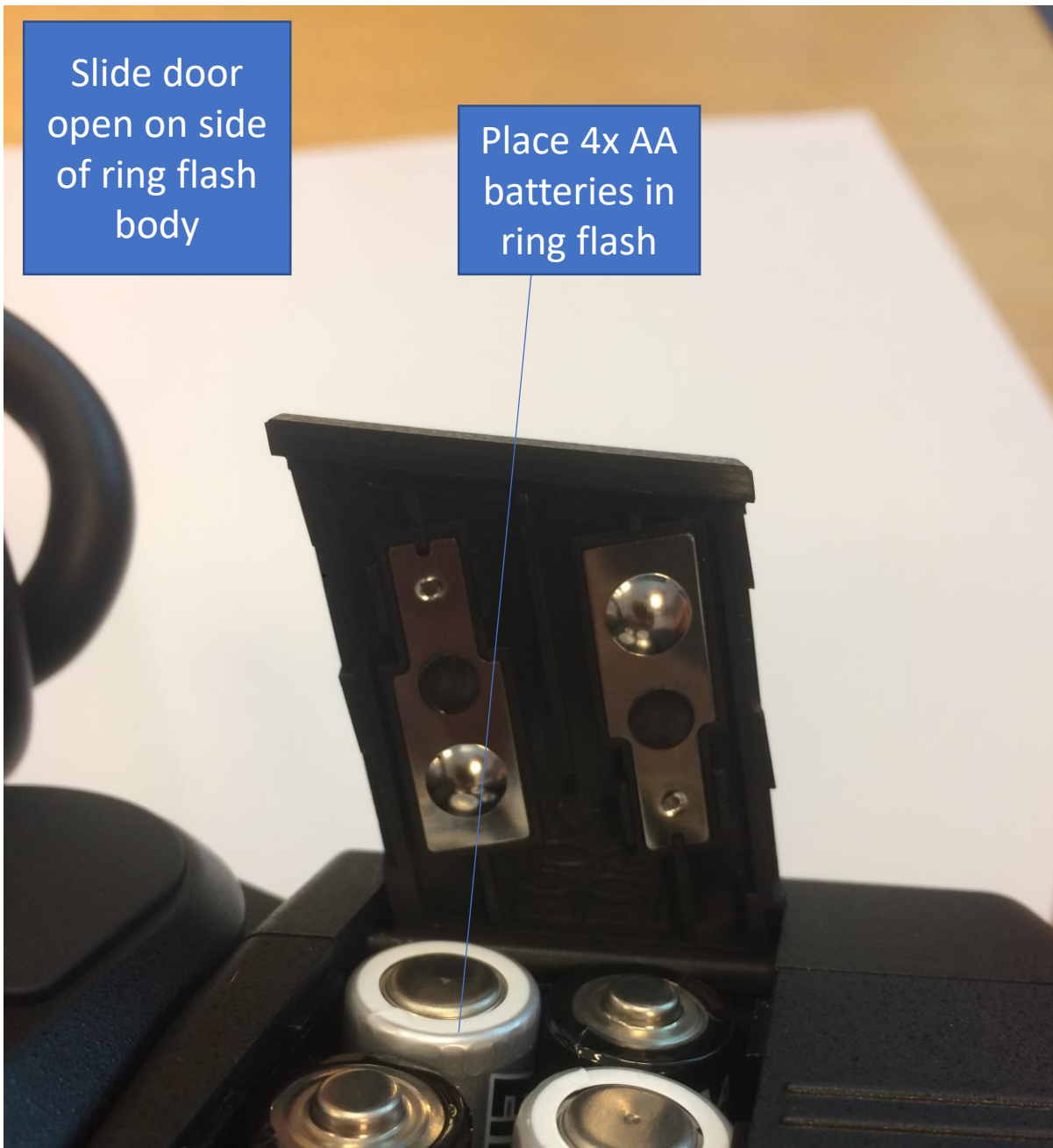
Camera strap

Battery charger



Slide door
open on side
of ring flash
body

Place 4x AA
batteries in
ring flash



Rotate viewer
on camera
body



Viewer rotated and in place



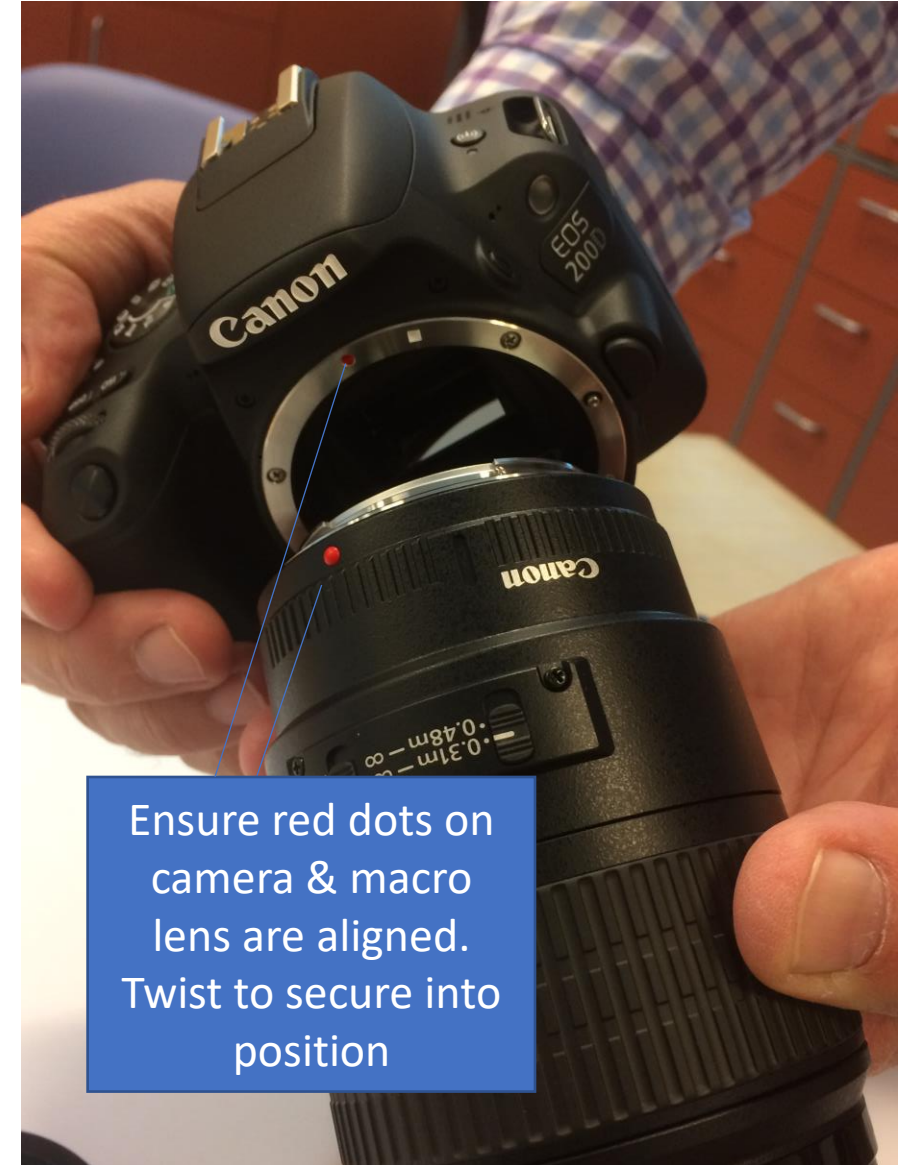
Remove camera cap (twist to left)

Macro lens


Camera body




Remove lens caps



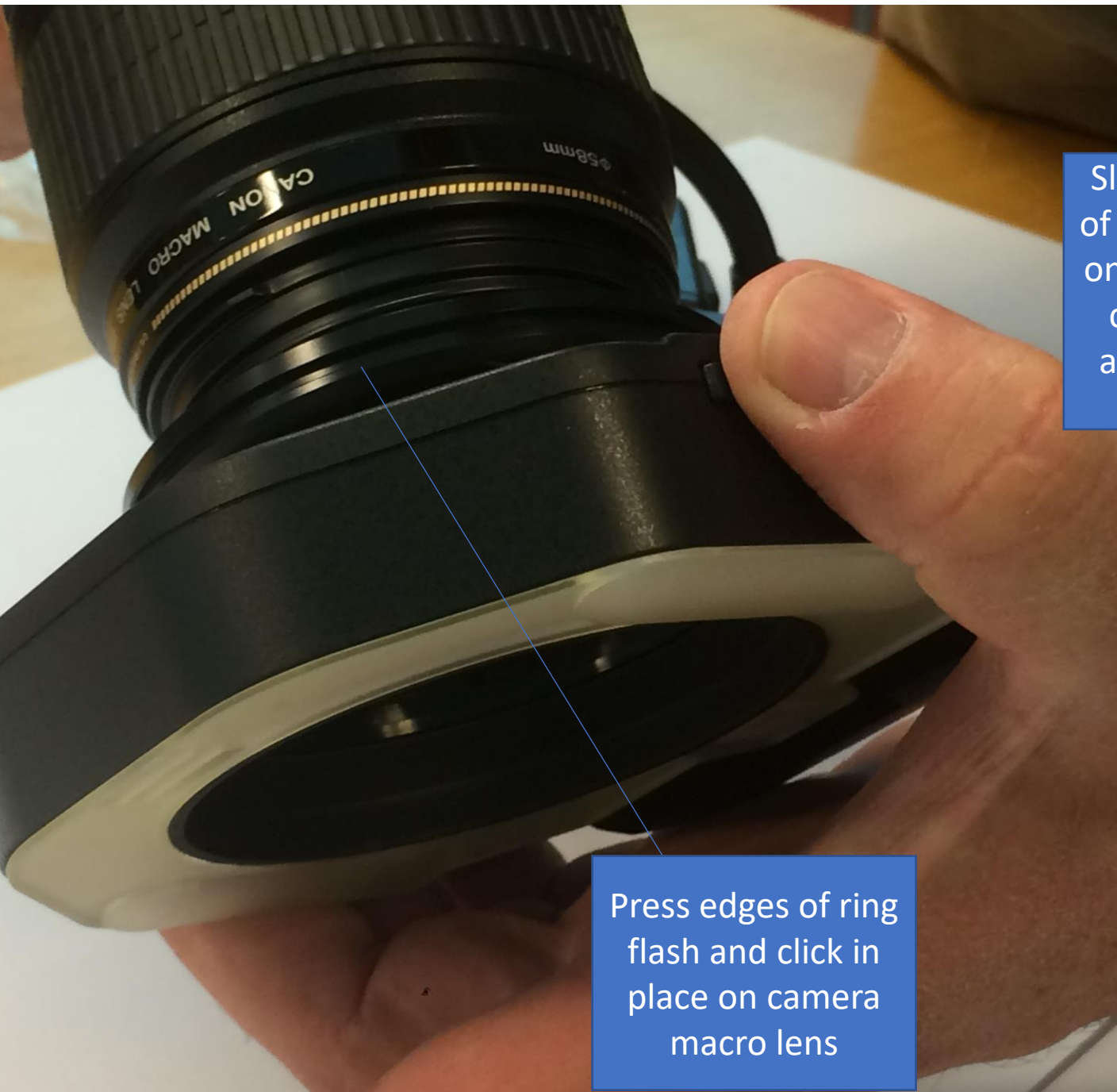
Ensure red dots on camera & macro lens are aligned. Twist to secure into position



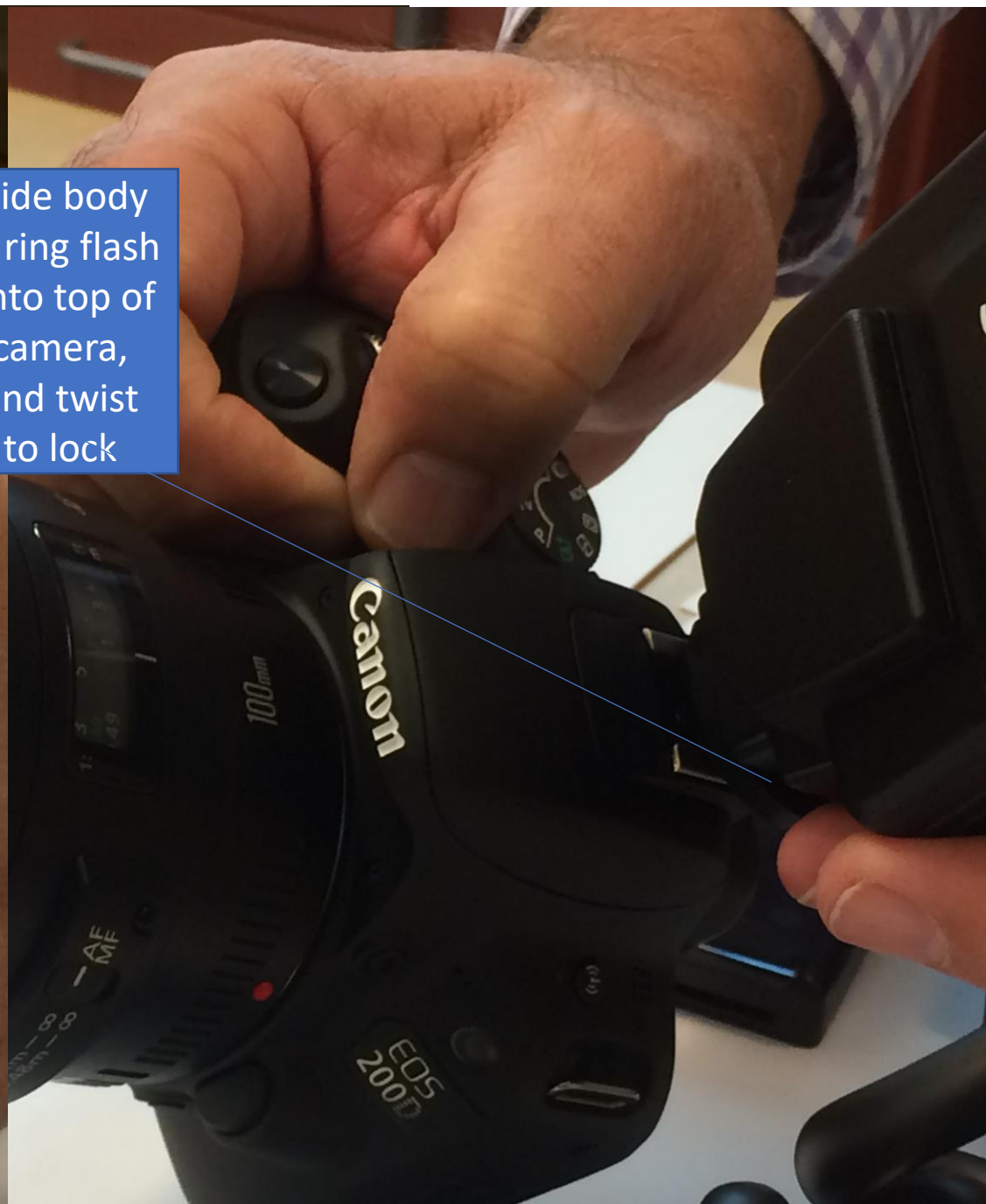
Thread adapter
onto macro lens



Insert memory card and
battery in base of camera
("Card/Batt. Open"),
click in place and close



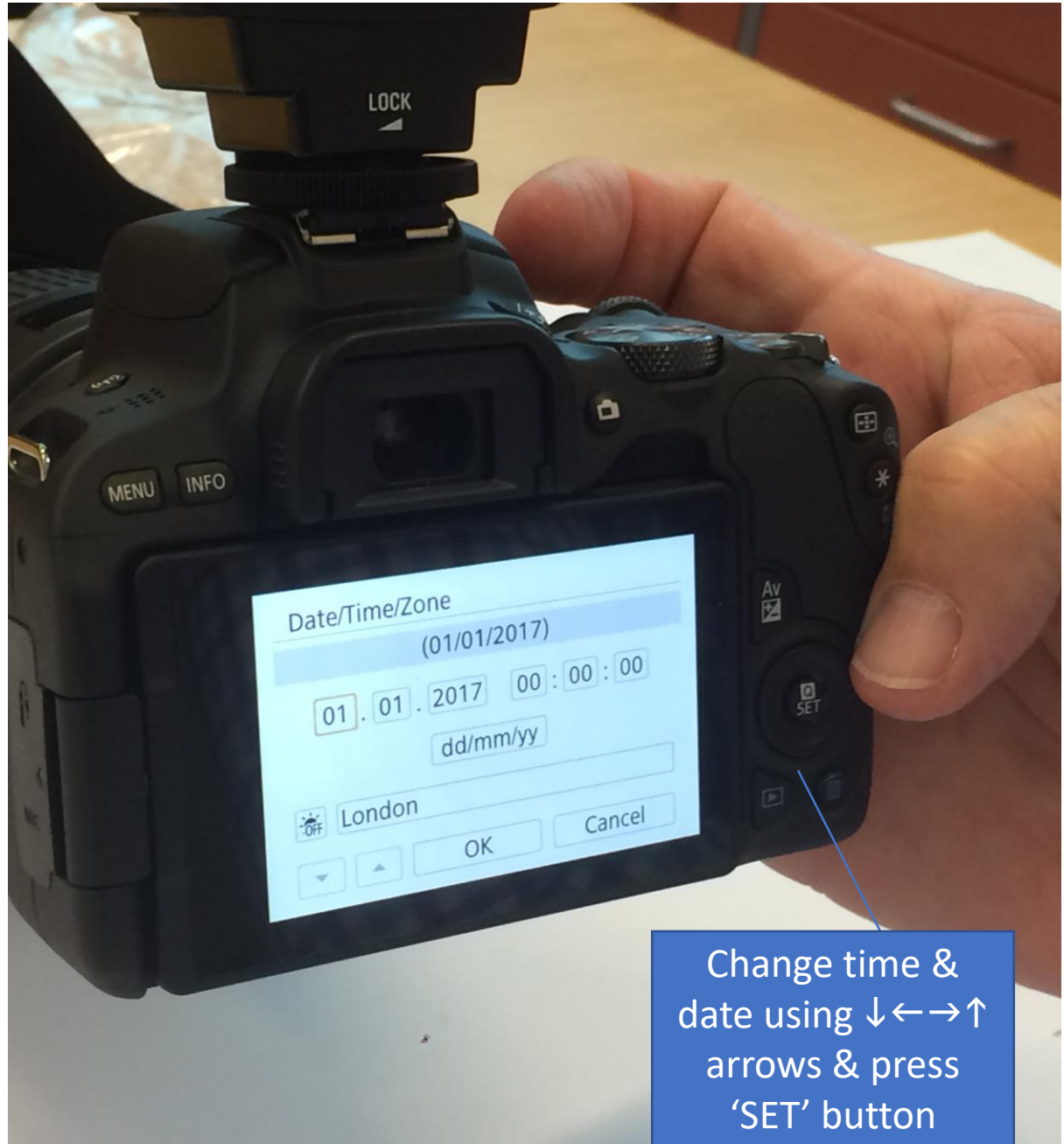
Press edges of ring flash and click in place on camera macro lens



Slide body of ring flash onto top of camera, and twist to lock



Turn camera on



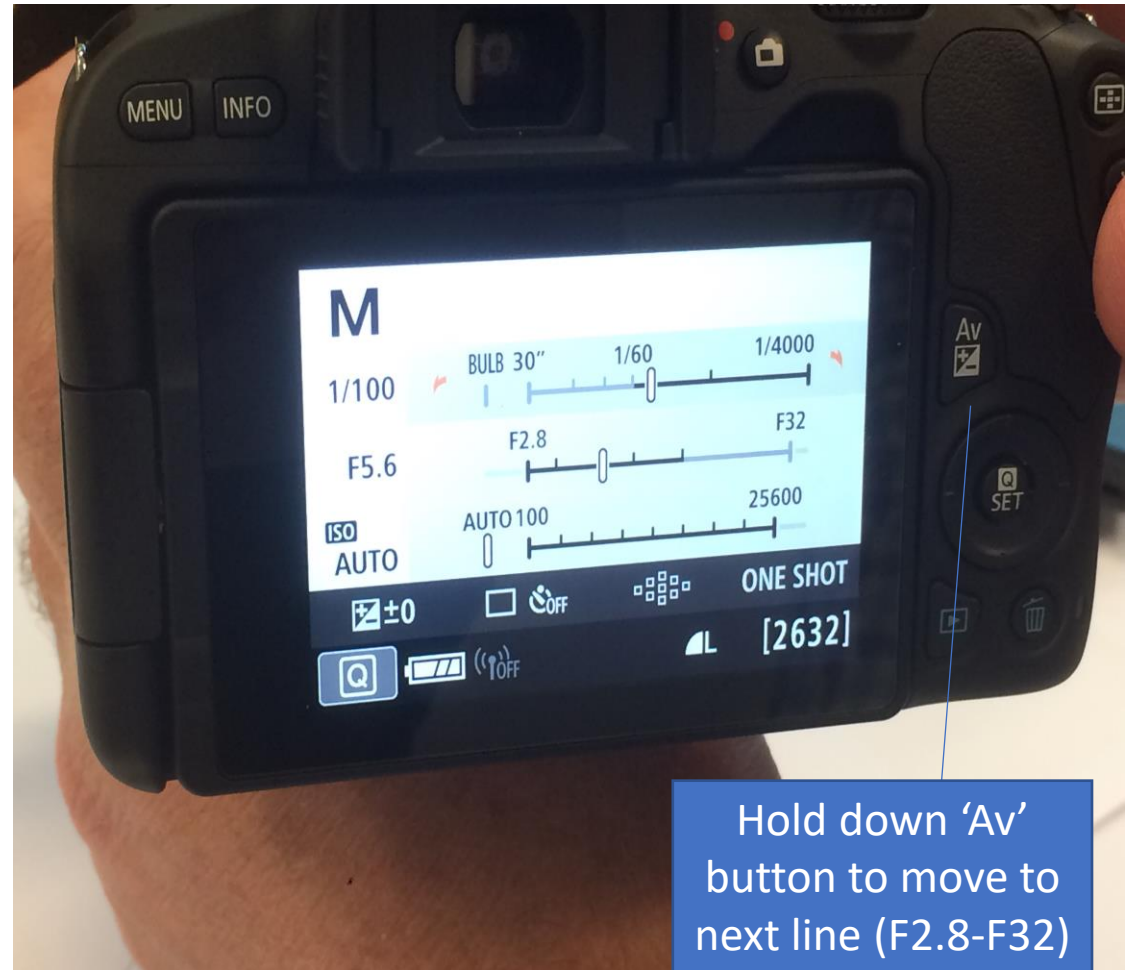
Change time & date using ↓←→↑ arrows & press 'SET' button

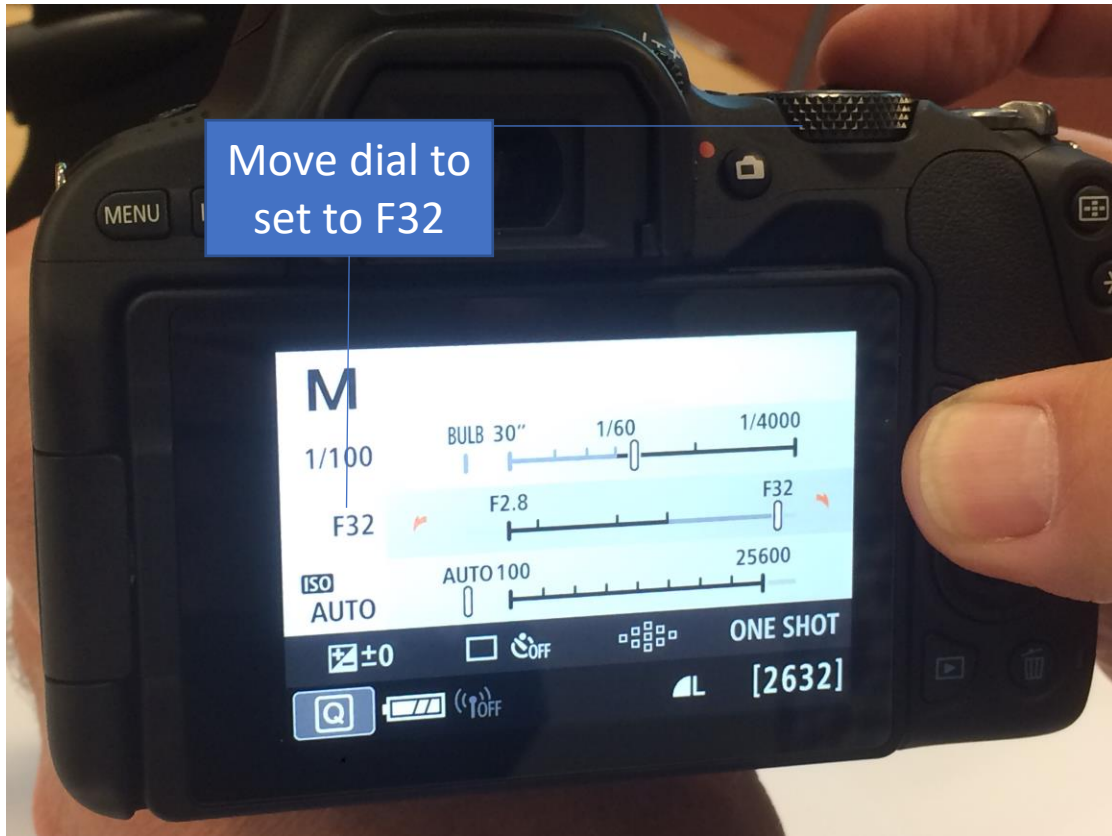


Set to
M =
manual

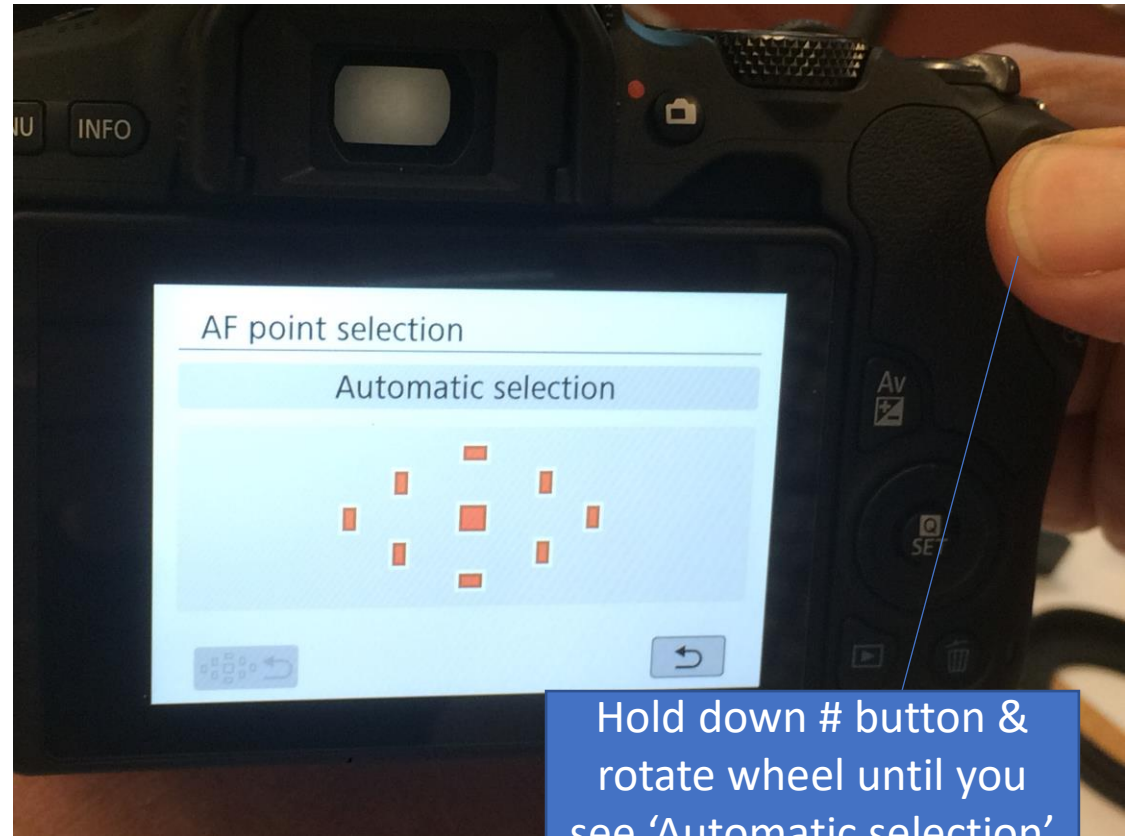


Set to AF =
auto focus to
0.31m (does
not need to
be changed)





Move dial to set to F32



Hold down # button & rotate wheel until you see 'Automatic selection' screen



Turn on flash light. 'ETTL' & '1.1' should appear (do not adjust)



Secure strap onto camera



Complete camera set-up



Images on camera downloaded into memory card – USB

Tips for taking good intraoral photos

- Always look through the camera viewer to determine what you want to take a photo of
- Press shutter release button half way to focus
- Camera will beep when image in focus. Take the photo when you hear the beep
- If photo too light or too dark, adjust shutter speed to between 1/30-1/60
- If image not in focus, move further away (need to be about 31cm away from what you are trying to capture)
- Secure strap secured on camera at all times
- Fit camera strap around your neck when in use to avoid dropping it

Digital photography for clinical records

Camera settings

Framing

Shooting: “the half press”

Camera shake

Retracting

Chairside assistance

Mirrors

Flash and Lighting

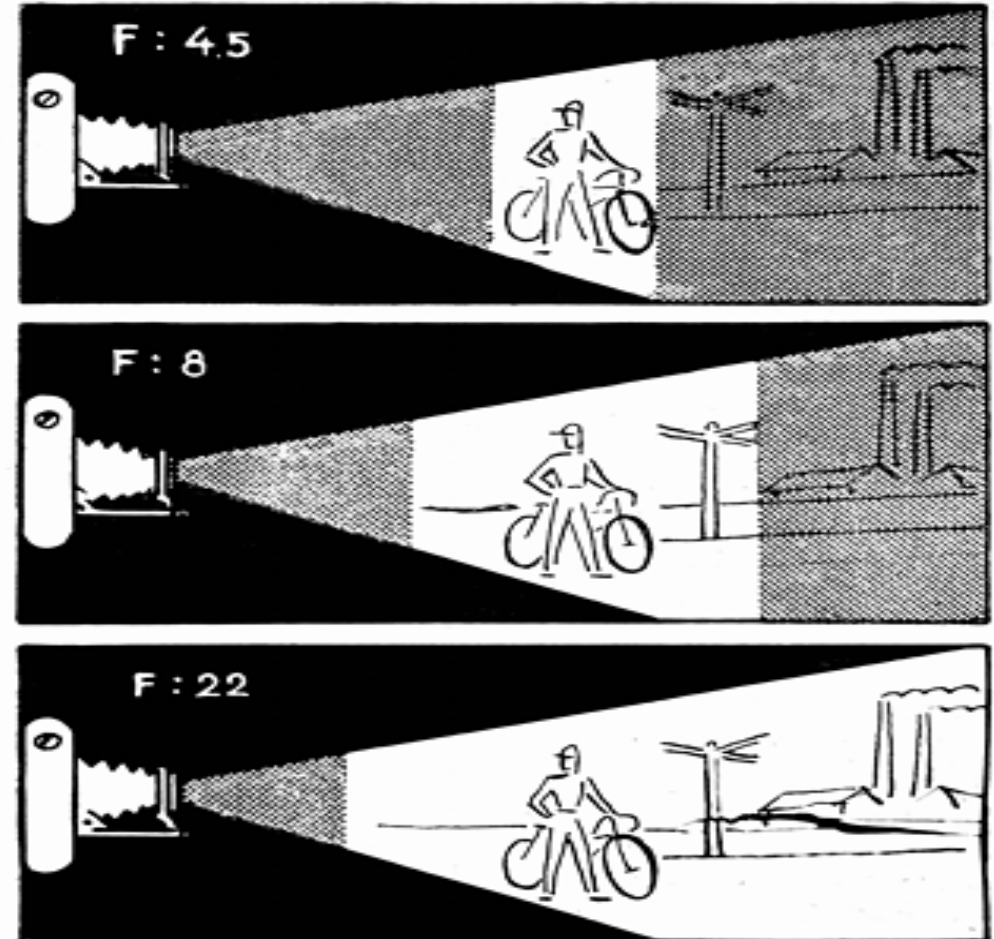
Depth of field

The range of distances within which the subject is rendered acceptably sharp in the image

The smaller the lens opening (larger number on the larger F stop), the greater the depth of field

BUT: smaller aperture needs either more light or a slower shutter

= macro lens with ring flash



Composition essentials

Framing

- Imagine the image before you start

Position patient

- Sitting up, rather than lying

Position yourself

- Standing, rather than sitting

Shooting

- The half-press

Focus lock

- Focus “frozen” BEFORE photograph

Faster full-press response

- Camera responds quicker

Composition essentials

Retracting: chairside assistance

You can't retract as well as photograph

- Practice with each other

- Gentle retraction (cup rather than stretch)

- Plastic vs metal

- Use the dental mirror

Care for infection control procedures

Mirrors

- Several sizes

- Wide, full arch

- Narrow, buccal surface

- Warm prior to use

Oral cancer screening and prevention program



Oral cancer screening and prevention program

For more information about the oral cancer screening and prevention program and how to get involved, contact: Kym Lang

Oral cancer screening and prevention program lead,
Dental Health Services Victoria

kym.lang@dhsv.org.au

With thanks to Michael McCullough, Professor, Oral Medicine
at the University of Melbourne